


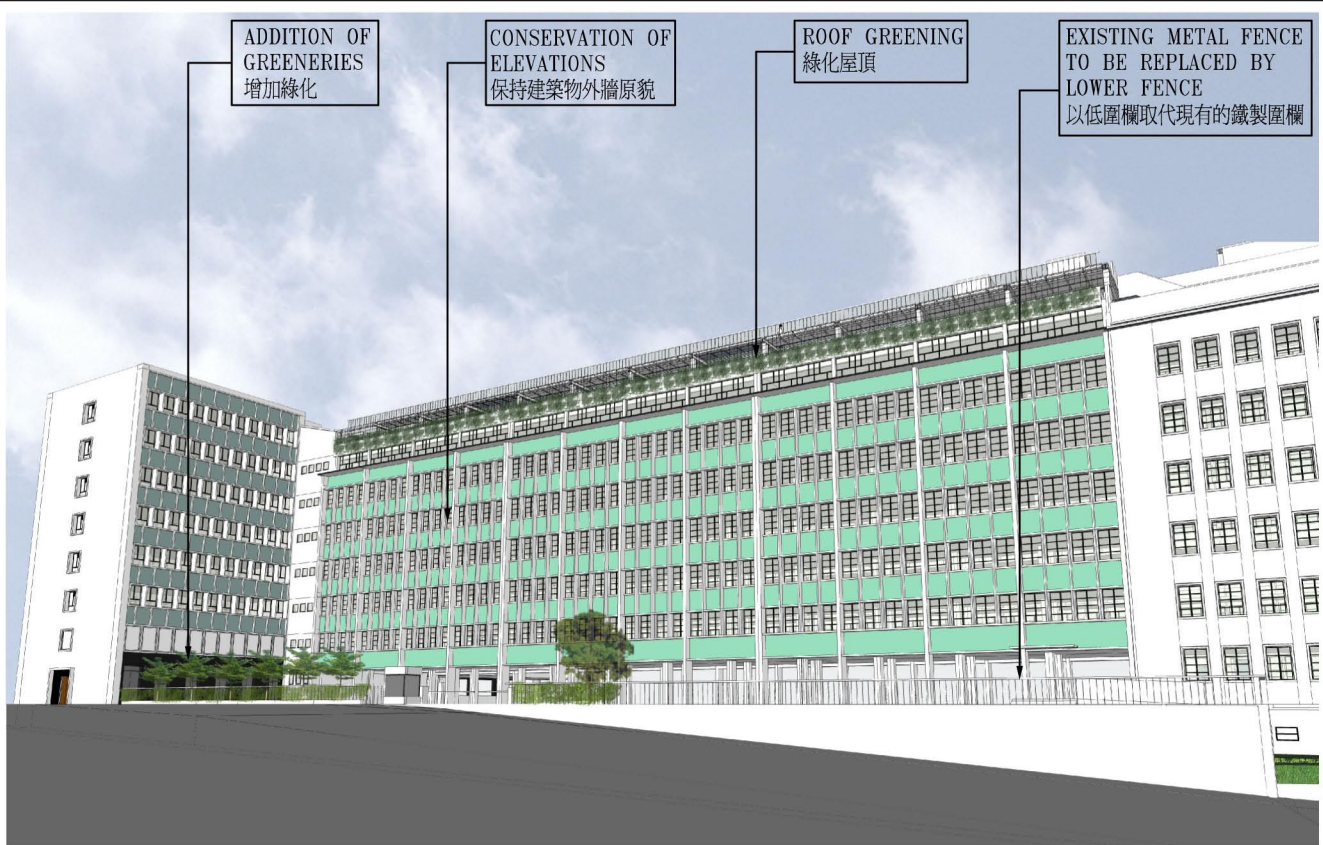
**SITE PLAN** 工地平面圖

title  
115KA  
律政司遷往前中區政府合署  
(中座及東座)  
RELOCATION OF THE DEPARTMENT OF  
JUSTICE TO THE FORMER CENTRAL  
GOVERNMENT OFFICES (MAIN & EAST WINGS)

drawn by C.S. LO	date Nov 2012
approved by H.K. LI	date Nov 2012
office ARCHITECTURAL BRANCH	

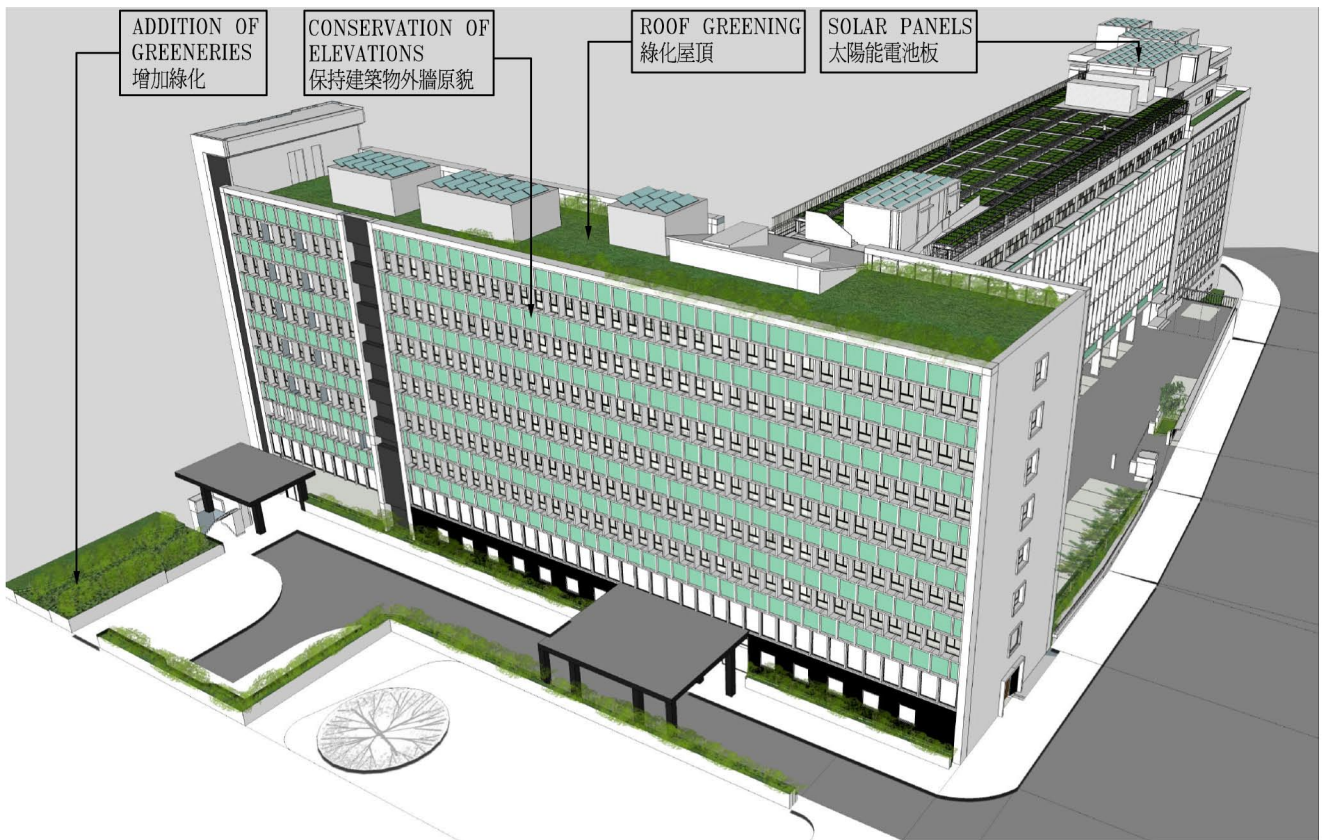
drawing no. AB/7960/XA001	scale 1:1000
 ARCHITECTURAL SERVICES DEPARTMENT	






從下亞厘畢道望向建築物的構思透視圖

**VIEW OF THE BUILDING FROM LOWER ALBERT ROAD (ARTIST'S IMPRESSION)**



從下亞厘畢道鳥瞰建築物的構思透視圖

**BIRD'S EYE VIEW OF THE BUILDING FROM LOWER ALBERT ROAD (ARTIST'S IMPRESSION)**

title <b>115KA</b> 律政司遷往前中區政府合署 (中座及東座) RELOCATION OF THE DEPARTMENT OF JUSTICE TO THE FORMER CENTRAL GOVERNMENT OFFICES (MAIN & EAST WINGS)	drawn by C.S. LO	date Nov 2012	drawing no. AB/7960/XA002	scale NTS
	approved by H.K. LI	date Nov 2012	 ARCHITECTURAL SERVICES DEPARTMENT	
	office ARCHITECTURAL BRANCH			

**FEATURES WITH HERITAGE VALUE TO BE PRESERVED AS SET OUT IN PARAGRAPH 8 OF THE PANEL PAPER**  
 委員會文件第八段所列的保育項目

- (a)1 The main entrance area on the west elevation of the Main Wing  
 位於中座西面地下的正門入口



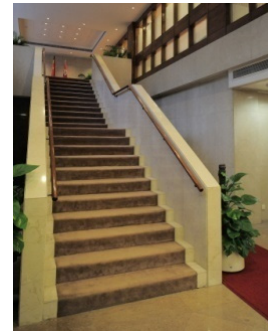
- (a)2 The main entrance area at the south elevation of the East Wing facing Garden Road  
 位於東座南面地下面向花園道的正門入口



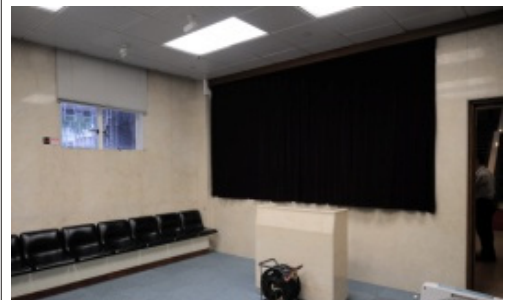
- (b)1 The original internal layout and furniture of the Executive Council Chamber on 1/F  
 一樓行政會議廳原裝的內部間隔和家具




- (b)2 The main staircase connecting the Chamber and the lobby on G/F of the Main Wing  
 連接會議廳及中座地下大堂的主樓梯



- (c) The small press room on G/F of the Main Wing and its internal setting  
 中座地下的小型記者室及內部裝置



title 115KA 律政司遷往前中區政府合署 (中座及東座) RELOCATION OF THE DEPARTMENT OF JUSTICE TO THE FORMER CENTRAL GOVERNMENT OFFICES (MAIN & EAST WINGS)	drawn by C.S. LO	date Nov 2012	drawing no. AB/7960/XA003	scale NTS
	approved by H.K. LI	date Nov 2012		
	office ARCHITECTURAL BRANCH			 ARCHITECTURAL SERVICES DEPARTMENT

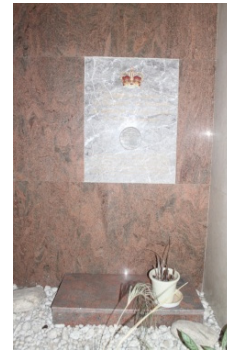


**FEATURES WITH HERITAGE VALUE TO BE PRESERVED AS SET OUT IN PARAGRAPH 8 OF THE PANEL PAPER (CON'T)**  
 委員會文件第八段所列的保育項目(續)

- (d) The internal layout and fittings of the conference room on 1/F of the East Wing to be incorporated into the reading corner of the future library  
 東座一樓會議室的內部間隔和設備，納為未來圖書館的閱讀角



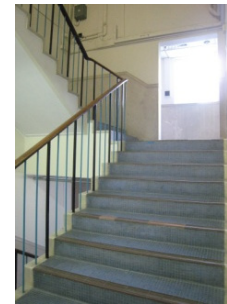
- (e) The commemorative plaque and time capsule in the lobby area of the Main Wing entrance  
 中座入口大堂的大理石紀念牌匾和時間囊




- (f)1 Existing terrazzo wall finishes found at the public lift lobby of the East Wing  
 現時東座電梯大堂牆壁上的水磨石裝飾



- (f)2 Existing terrazzo wall finishes found along the escape staircase of the East Wing  
 現時東座逃生樓梯牆壁上的水磨石裝飾



title <b>115KA</b> 律政司遷往前中區政府合署 (中座及東座) RELOCATION OF THE DEPARTMENT OF JUSTICE TO THE FORMER CENTRAL GOVERNMENT OFFICES (MAIN & EAST WINGS)	drawn by C.S. LO	date Nov 2012	drawing no. AB/7960/XA004	scale NTS
	approved by H.K. LI	date Nov 2012		
	office ARCHITECTURAL BRANCH			 ARCHITECTURAL SERVICES DEPARTMENT